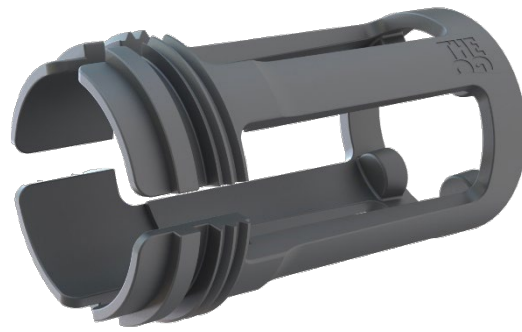
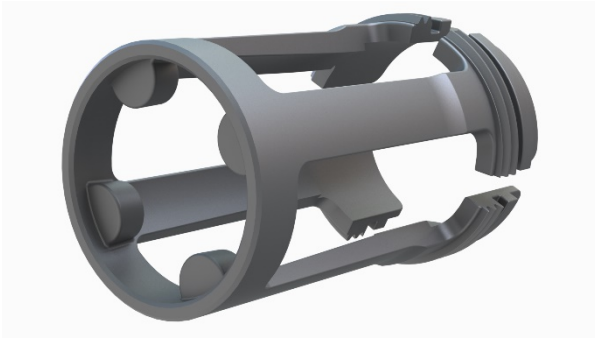


Mounting Rig – *slim open configurable design*



TGC-CMS-01

Designed for open innovation and full range interfacing

- Mechanical interfaces for vendor specific Tool Flange Adaptors, Actuator Inserts, Lock Ring and gripper lips.
- Features numerous combinatoric assemblies accomplished through hand-only exchange of both actuators and gripper lips.

Light weight – though robust and resistant

- The careful material selection features an extraordinary light weight, servicing high dynamic of pick and place operations not affected by heavy dead-weight of the gripper nor gripper attachment elements seen in other designs. Still the design and materials are selective chosen to accommodate the required mechanical durability and resistance to environment impact in terms of temperature, humidity UV light and chemical hostility.

Future expansion ready

- This universal element – the Mounting Rig – is locked down from an interface design perspective so you can earn on the benefits of our future expansion of the portfolio of both gripper lips and actuator options.

Compact – featuring tight fit requirements

- The Mounting Rig obtains minimum space features dense circumstances during both picking and placing. Often packaging and assembly tasks offers limited access spacing to fulfillment of the job. The TCG Mounting Rig has taken decades of hand-on experience and knowhow into account to comply with such requirements. No clearance space is wasted, so the gripper assembly is able to fit into even the tightest settings.

Topologic optimized 4x flexible fan-blades

- To accommodate the ambition of tool-free – human-hand-only design criteria the flexible fan-blades play a central role allowing that both actuator inserts and gripper lips to be mounted/dismounted fast and intuitively. The design gives a “human touch” user experience, that by the mechanical response alone “tells” the user that things are correctly in place.

Features



Generic top end interface for vendor specific Tool Flange Adaptor. Comprised of three back-lock knobs to catch and align the Tool Flange Adaptor elements.



The Lock Ring tread on all four flexible fan-blades is dimensionally designed to fit for hands-only operations fast and with “human-touch” force-feedback giving a natural feeling of needed and sufficient applied forces. The flexible blades allow to be squeezed so the Lock Ring can be pull on and off.



The Actuator Insert element fixing structure self-alignment and click-lock interface. The insert has an extended knob that matches the gob/slid between fan-blades. This serves to give an easy (poke-joke) assembly process, so when the blades are spread by pushing it in from below, the guides leads the way while pushing it further up until the tensioned blades will clamp-in once the insert reaches the interfacing structure. [LINK VIDEO](#)



Slim-fit design to serve tight-fit pick and place operations.

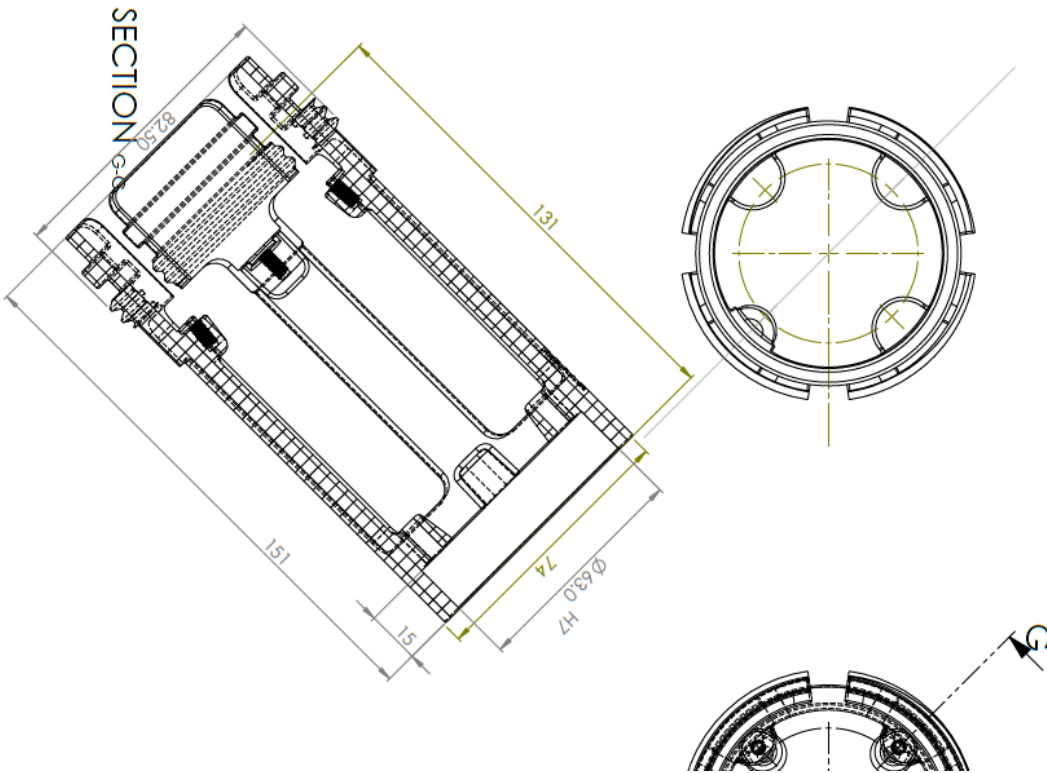


Resist highly aggressive cleaning agents. Including chloride solution. For further information [LINK](#)



SKU	color	Weight	Material (See table)	Chemical resistance	recyclable	Food Grade
TGC-CMS- 01	Gray	110g	Reinforce PU	yes1)	yes	Yes ²⁾

1) [Chemical Resistance Table](#)
 2) [Food Compliance US](#) , [Food compliance EU](#)



Material technical overview

Shore D Hardness	70
Ultimate Tensile,	35.8 MPa
Tensile Modulus	1006 MPa
Elongation @ Break	4%
Flexural Strength,	42.7 MPa
Flexural Modulus	1258 MPa
Compressive Strength	38.4 MPa
Heat Deflection Temp	72 °C
Compressive Modulus	44.8 MPa