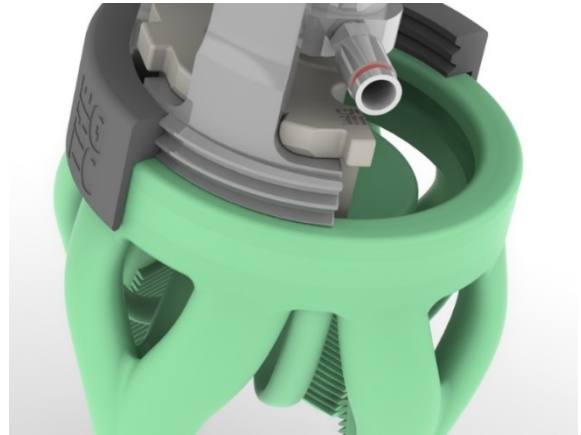


Lock Ring - hands-only operation

TGC-LIN



Designed for open innovation and full range interfacing

- The Lock Ring serves to secure the full range of gripper lips by a familiar nut tightening by your bare hands.
- No tools required – exchange of both actuator and gripper lips.
- Disassembly – simply un-turn the ring, and both the gripper lip and the Actuator of choice can be exchanged in seconds.
- Stay in place on the Mounting Rig when no gripper and actuator is attached
- Can be taken off simply by squeezing the Mounting Rig fan-blades and pull it off, i.e. for cleaning.

Light weight – though robust and resistant

- The careful material selection features an extraordinary light weight, servicing high dynamic of pick and place operations not affected by heavy dead-weight of the gripper nor gripper attachment elements. Still the design and materials are selectively chosen to accommodate the required mechanical durability and resistance to environment impact in terms of temperature, humidity, UV light and chemical hostility.

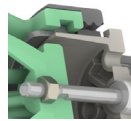
Ergonomics

- The other tough rim of the nut has been carefully surface structure design the provide a balanced grip that ensures excellent friction with your fingertips just enough, but too much ,so you can tighten /loosen the nut when fixing the lip in context. It provides a good feel for when the nut is sufficiently tightened. .

Compact – featuring tight fit requirements

- The Lock Ring obtains minimum space features dense circumstances during both picking and placing. Often packaging and assembly tasks offers limited access spacing to fulfillment of the job. The TCG Mounting Rig has taken decades of hand-on experience and knowhow into account to comply with such requirements. No clearance space is waisted, so the gripper assembly is capable to fit into even the tightest settings.

Features



Featuring ribs on the interfacing inner surface to interact with the all-around gripper lip upper ring. When turned by hand for tightening, it secures the soft-material of the gripper lip by squeezing it against the Mounting Rigs cavities . Tolerances and material properties are carefully optimized to achieve such "human touch" feeling. The absence need for any tools is highly deliberate to avoid undesired down-time and to secure agile operation.



Interfaces the Mounting Rig fan-blade treading to by hand turned to secure both the actuator and gripper lip of choice. The cavity rim of the gripper lips is pull over the fan-blades convex rim. This secures a poke-joke intuitive initial mount of the lip. Once in place, the Lock Ring is turned to tighten around the outer ring surface where the inner ribs of the nut will compress the soft lips and ensure a robust fixation even under repetitive dynamic impact of gripper operation reflecting lips stress and deflection.



The Mounting Rig treading interface is located in line with the clamping structure for the Actuator Insert in such a way that once the ring is turned it forces the insert to be tight-fit into position and hold steady while the actuator pushes and pulls onto the gripper lip.



Slim-fit design to minimize clearance space featuring thigh-fit operations. This is especially beneficial during placement in tight scape requirement scenarios.



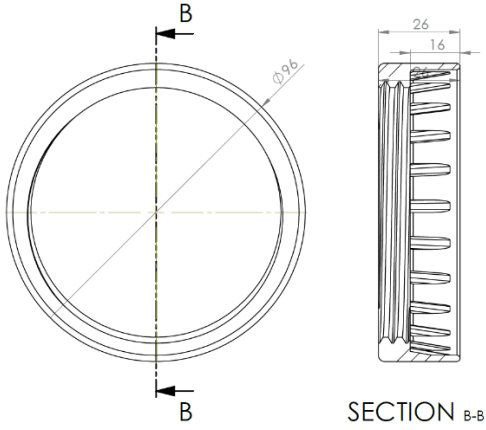
Resist highly aggressive cleaning agents. Including chloride solution. For further information [LINK](#)



Lock Ring - TGC-LIN-xx

SKU	color	Weight	Material (See table)	Chemical resistance	recyclable	Food Grade
TGC-LIN- 01	Dark gray	38g	Reinforce PU	yes1)	yes	Yes ²⁾
1) Chemical Resistance Table						
2) Food Compliance US , Food compliance EU						

Accessories



Material technical overview

Shore D Hardness	70
Ultimate Tensile,	35.8 MPa
Tensile Modulus	1006 MPa
Elongation @ Break	4%
Flexural Strength,	42.7 MPa
Flexural Modulus	1258 MPa
Compressive Strength	38.4 MPa
Heat Deflection Temp	72 °C
Compressive Modulus	44.8 MPa