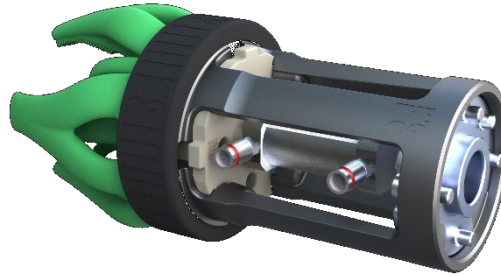
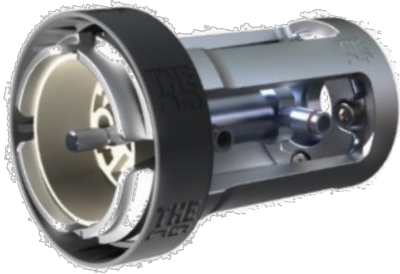


Any-Mount – Mount anything, anywhere



TGC-GA-xx

Designed for freedom to operate without compromise

- Modular structural design
- Light weight,
- Resilient to mechanical impact, temperature and humidity
- Chemical resistance
- Intuitive assembly sequence
- Unrestricted combinatoric configurations
- Tool-free operation and gripper changeover

Easy tool-free assembly and gripper changeover

- The user-friendly design facilitates mounting and removal of the specific gripper and actuator-modules, without any need for tools, using only your hands. The mechanical interfaces are “poke joke”. Human hand compliant and give a great feel feedback when working with the assembly – [Video Link](#)

Accommodates robot vendor specific tool flanges

- Robot tool flange designs and dimensions are vendor specific. But the only thing you must exchange when switching robot is the Tool Flange Adaptor. We supply inserts for a list of the most common robot vendors. In case your robot isn't covered or otherwise, we've shared the CAD data necessary for you to make your own.

Easy cleaning – resistant to aggressive processes

- All materials are blended to be resistant to cleaning with chemical agents, scrubbing and high pressure wash-down
- Intuitive and tool-free disassembly, eliminating hidden cavities and accommodates inspection.
- Fits into a commercial dishwasher, or even autoclave-based wash and disinfection processes.
- No sharp edges or narrow/hidden cavities enables

Elements



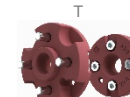
Mounting Rig serves to interface all variants of vendor specific robot Tool Flange Adaptors at the back end, all actuator inserts and all gripper lips by having the Lock Rings compliant gripper nut treading



The Lock Ring serves to secure the soft gripper lip and actuator insert by simple hand-driven three turn tread maneuver. Stays on when gripper lip is removed and if desired easily removed by hand-based compression of the four fans of the Mounting Rig and pulling the ring over the fan-blades



The Air Actuator Insert serves to hold the gripper actuator. Easily lock in place by squeezing it from below and up with the four guide-nobs aligned into the four slides between the flexible fan-blades. Will automatically lock into position once pushed all the way up until the mechanical interface syncs and the blades spring force clamps back. This is the preferred actuation in hutch work environments. It's also the fastest and lightest solution, so when high dynamics are in play you are recommended to apply this to reach the highest throughput



For convenience we offer Tool Flange Adaptors for a large range of the most popular robot brands see range in the following table or visit www.thegrippercompany.com for the frequently updated assortment. We also offer 3D CAD download, so you have the interface design for your own Tool Flange module.



Any-Mount – TGC-GA-xx

SKU	Mounting Rig	Lock Ring	Tool Flange Adaptor	Actuator insert	Weight.	Drive system
TGC-GA-AIR- ABB -001	TGC-CMS-01	TGC-LIN- 01	TGC-RTFA- ABB	TGC-AIM- AIR-S25	320g	Solenoid air valve
TGC-GA-AIR- ADEPT - 001	TGC-CMS-01	TGC-LIN- 01	TGC-RTFA- ADEPT	TGC-AIM- AIR-S25	320g	Solenoid air valve
TGC-GA-AIR- COBOT - 001	TGC-CMS-01	TGC-LIN- 01	TGC-RTFA- COBOT	TGC-AIM- AIR-S25	320g	Solenoid air valve
TGC-GA-AIR- non - 001	TGC-CMS-01	TGC-LIN- 01	-	TGC-AIM- AIR-S25	282g	Solenoid air valve

Elements

SKU	Gripper adaptor Items	Material	Shore factors	Quantity Per Pack	Dim	Net Weight (Item)
TGC-SFG-4X-xx	All 4 soft finger gripper	Silicone	A35-A50	1	165xø90	138- 150g
TGC--RTFA-COBOTS	Tool Flange Adaptor item	PU-Resign	MINT-GREEN	1	Ø63x16	0.038 kg
TGC--RTFA-ADEPT	Tool Flange Adaptor item	PU-Resign	BLUE	1	Ø63x16	0.038 kg
TGC--RTFA-ABB	Tool Flange Adaptor item	PU-Resign	RED	1	Ø63x16	0.038 kg

